

 **WHITE SWAN® BRANDS**



LAST CALL

CLOSEOUT CATALOG

March 2020

TRUE FIT CROSSOVER V-NECK TOP

High crossover neckline creates an updated v-neckline. Front yoke ID badge loop keeps your ID secure. Unique four pocket design has two top loading on-seam pockets with two side entry signature zippered pockets. Side vents for ease of movement.

TRI-BLEND FABRIC:

72% polyester, 21% rayon, 7% spandex

LENGTH: 26"

POCKETS: 4

SIZES: XXS-5X

STYLE # 2299



THE FAVORITE V-NECK TOP

Unique v-neck styling offers a feminine touch. Two top loading pockets with a signature zippered pocket for added security. Side seam hem venting for easy all-day movement.

TRI-BLEND FABRIC:

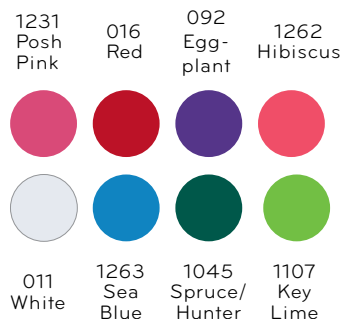
72% polyester, 21% rayon, 7% spandex

LENGTH: 27"

POCKETS: 3

SIZES: XXS-5X

STYLE # 2206



*All Jockey® Scrubs styles shown in Last Call do not adhere to MAP pricing policy.



SPORTY MESH PANEL V-NECK TOP

T-shirt inspired v-neck top is soft to the touch. Contrast tri-blend panels on front and back for athletic inspired look. Contrast mesh side panels to keep you cool and comfortable.

TRI-BLEND FABRIC:

72% polyester,
21% rayon,
7% spandex

MESH: 100% polyester

LENGTH: 25½"

POCKETS: 2

SIZES: XXS-3X

STYLE # 2403



011
White

015
Black

CURVES AHEAD MOCK WRAP TOP

Clean-finished mock wrap neckline with princess seaming for a universally flattering fit. Forward shoulder seam ID badge loop keeps your ID secure. Unique top loading pockets with two additional signature zippered pockets on top and one hidden media pocket. Side seam hem venting for easy all-day movement.

TRI-BLEND FABRIC:

72% polyester, 21% rayon, 7% spandex

LENGTH: 26"

POCKETS: 5 (1 hidden)

SIZES: XXS-5X

STYLE # 2306



011
White

016
Red

080
Carib-
bean

1045
Spruce/
Hunter

1031
Galaxy



EVERYDAY COMFORT TOP

Soft v-neck with triple needle stitching down front and across pocket tops. Princess seams fit to flatter everyone. Two roomy top-loading pockets to hold all your gear. Side-seam hem vents for easy all-day movement.

TRI-BLEND FABRIC:

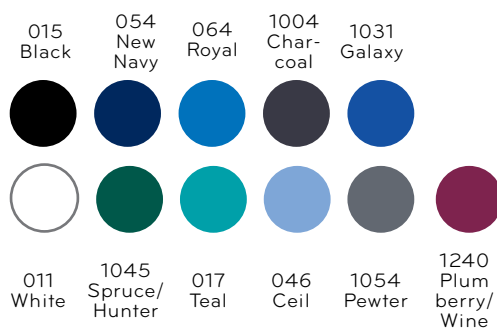
72% polyester, 21% rayon, 7% spandex

LENGTH: 26"

POCKETS: 2

SIZES: XS-3X

STYLE # 2448



PERFECT PLACKET TOP

Placket neckline for an updated professional look. Two top loading angled welt pockets. Side vents for easy all-day movement.

TRI-BLEND FABRIC:

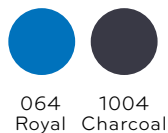
72% polyester, 21% rayon, 7% spandex

LENGTH: 26"

POCKETS: 3

SIZES: XXS-3X

STYLE # 2474



*All Jockey® Scrubs styles shown in Last Call do not adhere to MAP pricing policy.

A-ROUND THE CLOCK COMFORT TOP

Rounded v-neck detail gives an updated look to a traditional neckline. Princess seam with two curved top loading pockets and one signature zipper pocket. Side seam vents for easy all-day movement.

TRI-BLEND FABRIC:

72% polyester, 21% rayon, 7% spandex

LENGTH: 25½"

POCKETS: 3

SIZES: XXS-3X

STYLE # 2473



064
Royal

1004
Char-
coal

1031
Galaxy

1231
Posh
Pink

011
White

054
New
Navy



FLEX GEN 2 TOP

Asymmetrical princess seam mock wrap neckline. Two deep top loading pockets with Jockey® branded elastic tool tape. Side-seam vents for easy all-day movement.

TRI-BLEND FABRIC:

72% polyester, 21% rayon, 7% spandex

LENGTH: 26"

POCKETS: 2

SIZES: XXS-3X

STYLE # 2475



CLASSIC FIT



1031
Galaxy

064
Royal



JOCKEY
SCRUBS



AN ESSENTIAL PIECE

SPORTY V-NECK TOP

Princess seams are attractively accented with contrast piping. Two pockets emphasized with double-needle contrast topstitching. Contrast band found inside shirttail hem. No side venting for a sporty look

TRI-BLEND FABRIC:

72% polyester, 21% rayon,
7% spandex

LENGTH: 26"

POCKETS: 2

SIZES: XXS-5X

STYLE # 2339



555
Mint

MESHABILITY MODERN TOP

T-shirt inspired v-neck creates comfort and style. Strategically placed mesh around arm and back of neck gives you a breathable feeling. Curved hem pockets with mesh trim detail. Front and back princess seams for a flattering fit.

TRI-BLEND FABRIC:

72% polyester, 21% rayon, 7% spandex

MESH: 100% polyester

LENGTH: 25½"

POCKETS: 3

SIZES: XXS-3X

STYLE # 2329



015
Black



054
New
Navy



1231
Posh
Pink



1004
Charcoal



MODERN FIT

*All Jockey® Scrubs styles shown in Last Call do not adhere to MAP pricing policy.

THE EDGE OF GREATNESS TOP

Asymmetrical v-neckline gives this top a fun and modern feel. Two top loading pockets with two signature zippered pockets on top to hold all your gear. Angled back yoke and asymmetrical princess seam detail. Side-seam hem venting for easy all-day movement.

TRI-BLEND FABRIC:

72% polyester, 21% rayon, 7% spandex

LENGTH: 26"

POCKETS: 4

SIZES: XXS-3X

STYLE # 2468

046
Ceil



011
White



015
Black



054
New Navy



064
Royal



1004
Char-
coal



1031
Galaxy



CLASSIC FIT

DRY COMFORT TEE

Rounded comfort collar with set in sleeves.
Athletic inspired X back detail. Hi-low shirttail hem.

95% polyester / 5% spandex

silk touch moisture wicking fabric

LENGTH: 25"

POCKETS: 0

SIZES: XXS-3X (all but white)

L-3X (white only)

STYLE # 2408

1231
Posh
Pink



064
Royal



1107
Key
Lime



011
White

L-3X Only



015
Black



054
New
Navy



MOISTURE
WICKING



FOUR-WAY
STRETCH



MODERN FIT

THE MODERN V-NECK TOP

Flattering v-neck top features contrast back neck facing and bartacks. Front and back princess lines and T-shaped back yoke offer feminine touches. Double patch pockets plus one security pocket with zipper. Side seam hem venting means easy all-day movement.

TRI-BLEND FABRIC:

72% polyester, 21% rayon, 7% spandex

LENGTH: 25"

POCKETS: 3

SIZES: XXS-5X

STYLE # 2309

011 White 015 Black 1054 Pewter 064 Royal



1004 Charcoal

1240 Plumberry/Wine

046 Ceil

017 Teal

080 Caribean



MODERN FIT



¼ ZIP DOUBLE DUTY TOP

¼ Zip neckline with tonal mesh lining. Athletic inspired drop back V neckline. Front and back princess seams for ultimate fit. Two top loading pockets with one secure zipper pocket. Side vents for easy all-day movement.

TRI-BLEND FABRIC:

72% polyester, 21% rayon, 7% spandex

LENGTH: 26"

POCKETS: 3

SIZES: XXS-5X

STYLE # 2471



1031 Galaxy

015 Black

017 Teal

054 New Navy

064 Royal



CLASSIC FIT





PEAK PERFORMANCE TOP

Curved back yoke with breathable Motion Mesh™ peek-a-boo keyhole to help keep you cool and comfortable. Sleek curved v-neck featuring texture band. Two needle action stitching for durability. Two deep top-loading pockets with texture curved pocket tops. Texture insert side vents. Reflective Jockey® logo.

BODY: 93% polyester / 7% spandex
Four-way Stretch moisture wicking fabric with anti-microbial odor control technology

KEYHOLE: 90% nylon / 10% spandex

SHEER MOTION MESH™

LENGTH: 25"

POCKETS: 2

SIZES: XXS-3X

STYLE # 2441



064
Royal



1031
Galaxy



1231
Posh
Pink



017
Teal

ANGLED POCKET V-NECK TOP

Teardrop patterned Solid Illusion® styling. Shaped v-neck provides the perfect amount of space for embroidery. Three angled pockets offer added convenience and accessibility. Side venting for ease of movement

TRI-BLEND FABRIC:

72% polyester, 21% rayon, 7% spandex

LENGTH: 25"

POCKETS: 3

SIZES: XXS-3X

STYLE # 2337



015
Black



1054
Pewter



MODERN FIT

SNAP TO IT WARM-UP JACKET

Round neckline with color matching cap snap closure. Front and back princess seams with two top loading, roomy pockets and hidden media pocket. Soft, stretch color matched knit cuffs.

TRI-BLEND FABRIC:

72% polyester, 21% rayon, 7% spandex

LENGTH: 28"

POCKETS: 3

SIZES: XS-5X

STYLE # 2356



016
Red



011
White



1231
Posh
Pink



1045
Spruce/
Hunter



CLASSIC FIT



RIVETING WARM-UP JACKET

Rounded v-neck with zipper closure. Soft, stretch color-matched knit cuffs. Roomy patch pockets with rivet detail and hidden media pocket.

TRI-BLEND FABRIC:

72% polyester, 21% rayon, 7% spandex

LENGTH: 28"

POCKETS: 3

SIZES: XXS-5X

STYLE # 2378



015
Black



054
New
Navy



011
White



CLASSIC FIT

THE FAVORITE FIT PANT

Half elastic back and half drawstring front for maximum comfort. Two front angled pockets plus cargo with signature zipper pocket offer incredible security and storage. Side vents for ease of movement. 19" leg opening with a slight flare 31 1/2" inseam.

TRI-BLEND FABRIC:

72% polyester, 21% rayon, 7% spandex

SIZES: XXS-5X, XXSP-2XP, XST-XLT

POCKETS: 4

STYLE # 2249



CLASSIC FIT

1231 Posh Pink	016 Red	092 Egg- plant	1107 Key Lime
1262 Hibiscus	011 White	1263 Sea Blue	1045 Spruce/ Hunter

IN A CINCH JOGGER PANT

Flat front full elastic waistband for ultimate comfort. Cinch cord with toggle at leg opening to convert from traditional pant to a jogger. Two front curved hip pockets to hold all your gear. 17" open leg opening with 31 1/2" inseam.

TRI-BLEND FABRIC:

72% polyester, 21% rayon, 7% spandex

SIZES: XXS-3X, XXSP-3XP, XXST-XLT

POCKETS: 2

STYLE # 2451



1045
Spruce/
Hunter



MODERN FIT



TOGGLE



AMAZING COMFORT PANT

Jockey® branded exposed elastic waist pant with elasticized Jockey® tie. Two angled hip pockets, plus two back welt pockets and a side cargo with elastic tool tape to store your gear. Side leg vent. 16" tapered leg opening with 32" inseam.

TRI-BLEND FABRIC:

72% polyester, 21% rayon, 7% spandex

POCKETS: 5

SIZES: XS-3X

STYLE # 2411

015
Black



054
New
Navy



064
Royal



1004
Charcoal



1031
Galaxy

SOFT COMFORT YOGA PANT

Contoured yoga waistband gently hugs and flatters. Secure side leg welt pocket creates an uncomplicated look. 19" leg opening with a straight leg 31" inseam.

TRI-BLEND FABRIC:

72% polyester, 21% rayon, 7% spandex

POCKETS: 1

SIZES: XXS-2X, XXSP-XLP, XXST-XLT

STYLE # 2358



MODERN FIT



092
Egg-
plant



017
Teal



046
Ceil



1031
Galaxy



EMBOSSED SIDE PANEL PANT

Flat front full elastic embossed waistband with Jockey® branded elasticized tie. Side leg cargo pocket set in the embossed side panel. Back facing action vent. Reflective Jockey® Logo. 16" tapered leg opening with 31 ½" inseam.

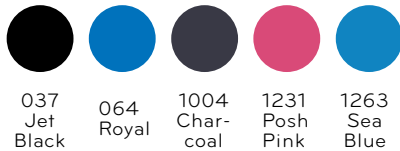
93% polyester / 7% spandex

Four-Way Stretch Moisture Wicking Fabric with Antimicrobial Odor Control Technology

POCKETS: 1

SIZES: XXS-3X, XSP-3XP, XST-XLT

STYLE # 2466



GREAT FOR GROUPS PANT

- 1" soft comfort pull on full elastic waist pant
- Stylish tapered straight leg design with side vents
- Two curved front hip pockets
- 16" leg opening with 31 ½" inseam

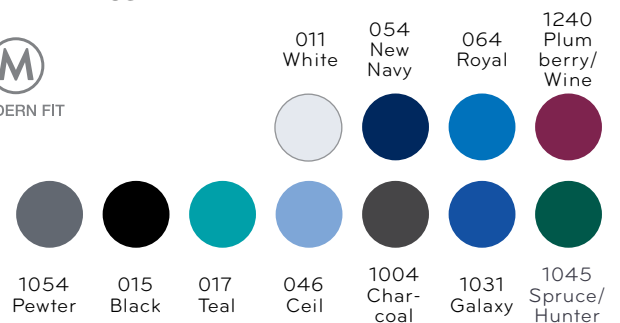
TRI-BLEND SOLID ILLUSION® FABRIC:

72% polyester, 21% rayon, 7% spandex

Sizes: Xxs, 4x-5x, Xsp-xlp, xst-xlt

Pockets: 2

STYLE # 2453



THE 3-IN-1 CONVERTIBLE PANT

Convertible drawstring waist lets you choose between mid-rise and low-rise. Tie on the outside for a traditional look, the inside for a tailored look and flip it down for a sportier look. Triple-colored waistband offers versatility. Cover-stitch details create a sporty look. 18" leg opening, straight leg inseam 31 $\frac{1}{2}$ ".

TRI-BLEND FABRIC:

72% polyester, 21% rayon, 7% spandex

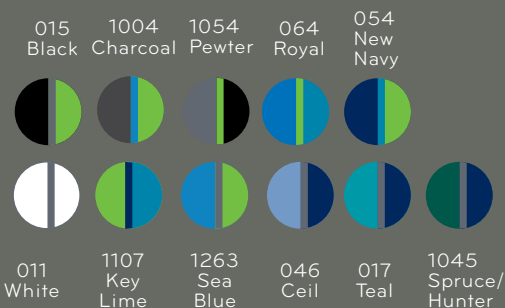
POCKETS: 3

SIZES: XXS-5X; XXSP-3XP; XST-XLT

STYLE # 2313



MODERN FIT



EXTREME COMFY PANT

Relaxed fit and slightly flared leg to ensure the ultimate comfort. Full elastic waist design with drawstring closure. Multi-pockets all in front for all-day functionality and lots of storage options. Vented leg openings for ease of movement. 18" leg opening with 31" inseam.

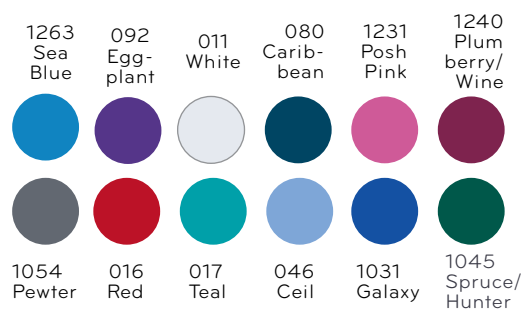
TRI-BLEND FABRIC:

72% polyester, 21% rayon, 7% spandex

SIZES: XXS-5X, XXSP-2XP, XST-XLT

POCKETS: 4

STYLE # 2377



CLASSIC FIT

THE EVERYDAY JOGGER PANT

Flat front full elastic waistband for ultimate comfort. Fully covered elastic jogger ankle gives a sporty, but professional look every day. Two front angled hip pockets and two angled on-seam back hip pockets will hold everything you need. 11" elastic leg opening with 31" inseam.

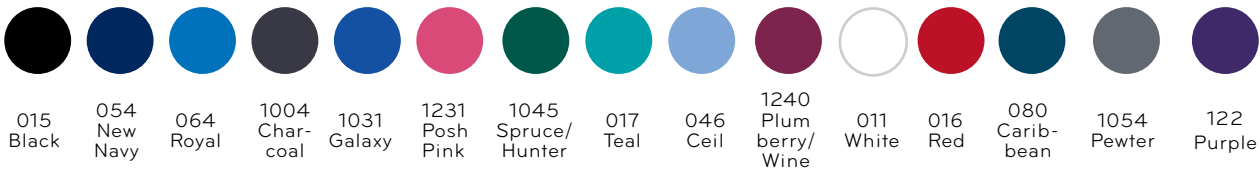
TRI-BLEND FABRIC

72% POLYESTER, 21% RAYON, 7% SPANDEX

SIZES: XXS-3X, XSP-3XP, XST-XLT

POCKETS: 4

STYLE # 2467



SOLID ILLUSION® PANT

Subtle hint of print using Solid Illusion® Geo Tech pattern to give you a fun pop of style. Half elastic back and half drawstring front for maximum comfort. Two front angled pockets plus cargo with additional signature zipper pocket offer incredible security and storage. Slight flare. Side vents for ease of movement. 19" leg opening with 31 ½" inseam.

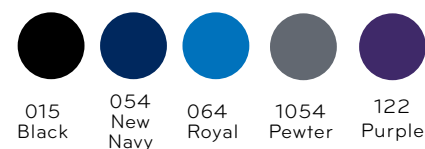
TRI-BLEND SOLID ILLUSION® FABRIC:

72% POLYESTER, 21% RAYON, 7% SPANDEX

POCKETS: 4

SIZES: XXS-5X, XXSP-2XP, XST-XLT

STYLE # 2250



THE ULTIMATE MATERNITY PANT

Pure comfort front and back stretch panel. Two front and two back hip pockets. Mock fly detail. Side vents for ease of movement. 16" leg opening with 31 ½" inseam.

TRI-BLEND FABRIC:

72% polyester, 21% rayon, 7% spandex

SIZES: XS-3X

POCKETS: 4

STYLE # 2459

1231
Posh
Pink



064
Royal



017
Teal



1031
Galaxy



046
Ceil





PLEATED BACK MATERNITY TOP

T-shirt inspired v-neck for an on trend look. Deep side entry front pockets store your gear out of the way. Sporty pleated back allows room for growing tummies.

TRI-BLEND FABRIC:

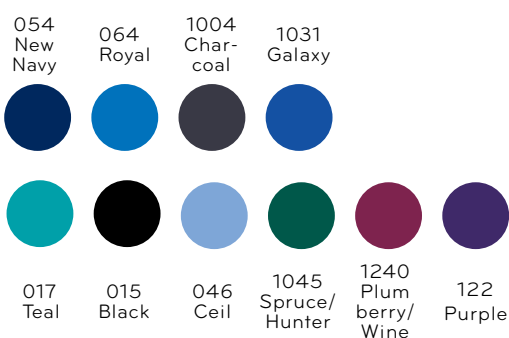
72% polyester, 21% rayon, 7% spandex

LENGTH: 26 ½"

POCKETS: 2

SIZES: XS-3X

STYLE # 2462



EMPIRE WAIST MATERNITY TOP

Keyhole neckline detail offers a feminine touch. Empire waist with adjustable back ties gives a customizable fit. Two front patch pockets to hold your gear.

TRI-BLEND FABRIC:

72% polyester, 21% rayon, 7% spandex

LENGTH: 26 ½"

POCKETS: 2

SIZES: XS-3X

STYLE # 2461



THE ULTIMATE UNISEX WARM-UP JACKET

Athletic inspired stand-up collar and snap front closure. Two angled opening patch pockets to hold all your gear. Soft, stretch color-matched knit cuffs.

TRI-BLEND FABRIC:

72% polyester, 21% rayon, 7% spandex

LENGTH: 29"

POCKETS: 2

SIZES: XXS-5X

STYLE # 2373



THE BEST UNISEX PANT

The most comfortable unisex pant in the industry. Full drawstring tie-waist has back elastic for maximum adjustability and comfort. Slimmer silhouette flatters both men and women. Deep cargo pocket on thigh is ideal for storage. Back hip pocket with self-adhesive hook and loop closure keeps valuables secure. 19" leg opening with 31" inseam.

TRI-BLEND FABRIC:

72% polyester, 21% rayon, 7% spandex

LENGTH & SIZES:

LENGTH:

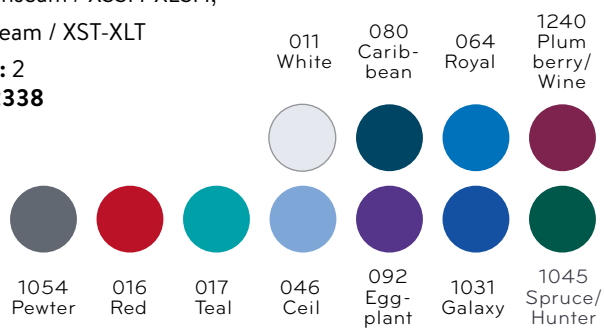
31" Average inseam / XS-4X;

28" Short inseam / XSSH-XLSH;

33" Tall inseam / XST-XLT

POCKETS: 2

STYLE # 2338





FOUR POCKET UNISEX TOP

Banded v-neck design for a classic, professional look. Forward dropped shoulder with badge loop for maximum comfort. Four pockets for all your gear. Side vents allow for easy mobility.

TRI-BLEND FABRIC:

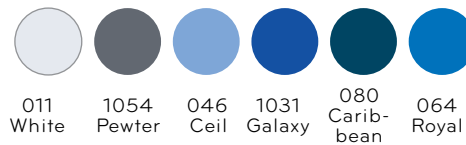
72% polyester, 21% rayon, 7% spandex

LENGTH: 28"

POCKETS: 4

SIZES: XS-4X

STYLE # 2371



ONE POCKET UNISEX TOP

Banded v-neck design for a classic, professional look. Classic front and back shoulder yoke detailing. Topstitching details provide extra strength and style. Chest pocket stores personal items. Side vents allow for easy mobility.

TRI-BLEND FABRIC:

72% polyester, 21% rayon, 7% spandex

LENGTH: 28"

POCKETS: 1

SIZES: XS-4X

STYLE # 2200





MEN'S MESH TOP

Breathable mesh shoulder panels to keep you cool and comfortable. Reflective tape on back for athletic look. Sporty v-neck for all day comfort. Chest pocket to store your personal items.

TRI-BLEND FABRIC:

72% polyester, 21% rayon, 7% spandex

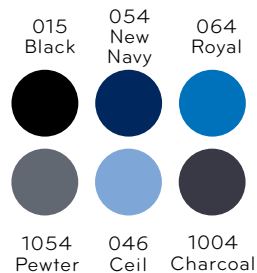
MESH FABRIC: 100% polyester

LENGTH: 28"

POCKETS: 1

SIZES: XS-4X

STYLE # 2374



MESH TECH TOP

Comfort shaped V-neck fits like your favorite tee. Body mapped mesh venting to keep you cool and dry. Double chest pocket with texture detail. Action back details stretch and move with you in any activity. Reflective Jockey® logo.

BODY: 93% polyester / 7% spandex Four-Way Stretch Moisture Wicking Fabric with Antimicrobial Odor Control Technology

MESH: 100% cool comfort polyester

Sizes: S-4X

Pockets: 2

Style# 2412





fundamentals®

14569

Ladies Mock Wrap Top










Features:

26" Length / Mock Wrap Neckline / **2 Curved Top Loading Pockets** / Side Slits

65% Polyester / 35% Cotton
Poplin with Soil Release

Sizes: XXS-5X



-  **011 White**
-  **015 Black**
-  **046 Ceil**
-  **017 Teal**
-  **054 New Navy**
-  **064 Royal**
-  **1031 Galaxy Blue**
-  **038 Wine**
-  **080 Caribbean**
-  **034 Hunter**
-  **1054 Pewter**
-  **1004 Charcoal**



14700

Ladies 2 Pocket Top

Features:

28" Length / Set-In Sleeves / **2 Roomy Patch Pockets** / Side Slits

65% Polyester / 35% Cotton

Poplin with Soil Release

Sizes: XXS-5X

 **078 Seaspray**

 **016 Red**



14720

Ladies Cargo Pant

Inseam: 31",

Petite: 29"

Tall: 33"

Features:

18" Straight Leg Opening / Covered Full Elastic Waist Pant / **2 Cargo Pockets** / Side Vents

65% Polyester / 35% Cotton

Poplin with Soil Release

Sizes: XXS-5X, XXSP-3XP, XST-XLT

 **078 Seaspray**

 **016 Red**

 **011 White**



14782

Ladies Pin Tuck Tapered Leg Pant

Inseam: 30 ½"

Petite: 28 ½"

Tall: 32 ½"

Features:

13 ¾" Straight Leg Opening / Back Elastic with Flat Front Drawstring Waist **2 Curved Front Hip Pockets**

65% Polyester / 35% Cotton

Poplin with Soil Release

Sizes: XXS-5X, XSP-2XP, XST-2XT



011 White



1031 Galaxy Blue



015 Black



038 Wine



046 Ceil



034 Hunter



054 New Navy

14712

The Professional Pant

Inseam: 31½" / **Petite:** 29½" / **Tall:** 33½"

Features:

19" Slight Flare Leg Opening / Mid-Rise Full Drawstring, Back Elastic Waist / **2 Roomy Hip Pockets** / Side Vents

65% Polyester / 35% Cotton Poplin with Soil Release

Sizes: XXS-5X, XXSP-2XP, XST-2XT



011 White



1031 Galaxy Blue



015 Black



038 Wine



046 Ceil



034 Hunter



017 Teal



014 Navy



054 New Navy



1054 Pewter



064 Royal



1004 Charcoal





14740

Ladies Warm-Up Jacket

Features:

28" Length / Set-In Sleeves / Front and Back Princess Seams / Snap Front Closure / Color Matching Knit Cuffs / **2 Deep Patch Pockets**

65% Polyester / 35% Cotton

Poplin with Soil Release

Sizes: XS-5X

- 080 Caribbean**
- 064 Royal**
- 1031 Galaxy Blue**
- 038 Wine**
- 1054 Pewter**

14378

Maternity Pant with Stretch Panel

Inseam: 32"

Features:

19" Slight Flare Leg Opening / 1 Welt Cargo Pocket / Front & Back Stretch Panel / Side Vents

65% Polyester / 35% Cotton

Poplin with Soil Release and

81% Cotton / 19% Lycra Tummy Panel

Sizes: XS-3X

- 054 New Navy**
- 064 Royal**
- 014 Navy**
- 038 Wine**



*All Jockey® Scrubs styles shown in Last Call do not adhere to MAP pricing policy



fundamentals®

14900

Unisex One Pocket Top

Features:

29" Length / Set-In Sleeves / **1**
Chest Pocket with Pen Divider

65% Polyester / **35%** Cotton Poplin
with Soil Release

Sizes: XXS-7X



078 Seaspray



016 Red

14920

Unisex Drawstring Pant

Inseam 31"

Short: 28"

Tall: 33"

Features:

18" Leg Opening / Full Drawstring
Waist **2 Pockets** — 1 Cargo Pocket
and 1 Back Hip Pocket / Non-
Contrast

65% Polyester / **35%** Cotton Poplin
with Soil Release

Sizes: XXS-7X, XSSH-3XSH, XST-2XT



078 Seaspray



016 Red





14770

Unisex Snap Front Warm Up Jacket

Features:

30" Length / **4 Pockets** - 2 Roomy Lower Patch Pockets with 1 Hidden Media Pocket & 1 On Seam Chest Pocket / Soft Stretch Rib Knit Cuffs / 5-Snap Closure

65% Polyester / 35% Cotton

Poplin with Soil Release

Sizes: XXS-5X

- | | |
|---------------------------|------------------------|
| ● 015 Black | ● 014 Navy |
| ● 017 Teal | ● 1004 Charcoal |
| ● 054 New Navy | ● 046 Ceil |
| ● 064 Royal | |
| ● 1031 Galaxy Blue | |
| ● 038 Wine | |
| ● 034 Hunter | |

14869

Unisex Three Pocket Top

Features:

29" Length / Set-In Sleeves / **3 Pockets** - 2 Deep Patch Pockets, / 1 Chest Pocket with Pen Slit

65% Polyester / 35% Cotton

Poplin with Soil Release

Sizes: XS-5X

- | | |
|-----------------------|------------------------|
| ○ 011 White | ● 038 Wine |
| ● 015 Black | ● 034 Hunter |
| ● 046 Ceil | ● 014 Navy |
| ● 054 New Navy | ● 1054 Pewter |
| ● 064 Royal | ● 1004 Charcoal |

14843

Unisex Five Pocket Pant

Inseam: 30½"

Short: 28½" **Tall:** 32½"

Features:

18" Leg Opening / Drawstring with Elastic Waist / Zipper Fly Detail / **5 Pockets** - 2 Cargo Pockets, / 2 Front Hip Pockets and 1 Back Hip Pocket / Non-Contrast

65% Polyester / 35% Cotton

Poplin with Soil Release

Sizes: XS-5X, XSSH-2XSH, XST-2XT

- | | |
|-----------------------|----------------------|
| ○ 011 White | ● 064 Royal |
| ● 054 New Navy | ● 1054 Pewter |
| ● 038 Wine | |




14560
Ladies Snap Front Top
Features:

25" Length / **2 Roomy On-Seam Top Loading Pockets** / 5 Color Matching Snaps / Front Princess Seams

65% Polyester / 35% Cotton
Poplin with Soil Release

Sizes: XXS-2X

White-011


14752
Hidden Placket Button Front Vest
Features:

26" Length / 4 Button Closure with Hidden Placket / **4 Angled Pockets**

65% Polyester / 35% Cotton
Fine Line Twill with Soil Release

Sizes: XXS-5X

White-011


14568
Collared Button Front Top
Features:

26" Length / 5 Color Matching Buttons / **2 Roomy Pockets** Front Darts / Back Yoke with Box Pleat

65% Polyester / 35% Cotton
Poplin with Soil Release

Sizes: XXS-5X

White-011



14231

Classic Skirt

Elastic Waist Skirt

Features:

30" Length / **2 Pockets** 1"
Elastic Waist Back Kick Pleat /
Side Vents

65% Polyester

35% Cotton

Poplin with Soil Release

Sizes: XS-5X



011 White



1246 Sand



046 Ceil



014 Navy



038 Wine



064 Royal



14563

Heavy-Weight Twill Pant

Inseam: 31 ½"

Petites: 29 ½"

Tall: 33 ½"

Features:

18" Leg Opening / Full
Elastic Waist / **4 Pockets**
- 2 Hip & 2 Cargo

65% Polyester

35% Cotton

Fine Line Twill with Soil
Release

Sizes: XXS-XL, XSP-XLP,
XST-XLT



011 White



20

2-Button Nurses Cap

Features:

Permanent No Starch Crisp Finish

Sold in Dozen Quantities Only

100% Cotton with Soil Release

Sizes: One Size Fits All



10

1-Button Nurses Cap

Features:

Permanent No Starch Crisp Finish

Sold in Dozen Quantities Only

100% Cotton with Soil Release

Sizes: One Size Fits All



19021
BIO Angle V

Length: 26"

Features:

Set-In Sleeves / **5 Pockets:** Two Lower Angled On Seam Pockets with Two Angled Welt Pockets and Welt Pocket on Chest / Side Vents

55% Cotton
42% Polyester
3% Spandex
STRETCH

Sizes: XXS-5X



1054 Pewter



046 Ceil



064 Royal

19021
046



19202
BIO Mega Pocket
Cargo Pant

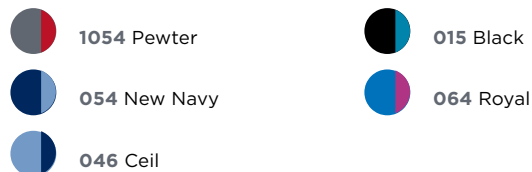
Inseam: 31½" / **Petite:** 29½" / **Tall:** 33½"

Features:

19" Leg Opening with 2½" Side Slits Full Interior Drawstring with Back Elastic / **5 Pockets:** Two Angled Front Hip Pockets, One Back Hip Pocket, and One Roomy Cargo Pocket with Additional Welt Pocket on Top

55% Cotton 42% Polyester 3% Spandex STRETCH

Sizes: XXS-5X, XXSP-2XP, XST-2XT



19208
BIO Everyday Pant

Inseam: 31½" / **Petite:** 29½" / **Tall:** 33½"

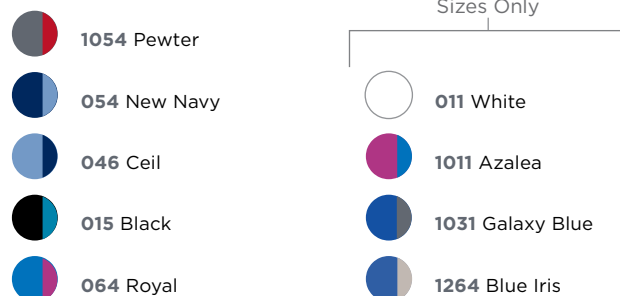
Features:

18" Leg Opening with 2½" Side Slits /Full Exterior Drawstring with Back Elastic

3 Pockets: Two Front Hip Patch Pockets and One Back Hip Pocket

55% Cotton 42% Polyester 3% Spandex STRETCH

Sizes: XXS-5X, XXSP-2XP, XST-2XT



**Hey Guys –
we designed this
scrub set for you.**

**From the working
fly to the tailored
fit, topped with a
fabric that wears
well throughout
your day.**

**19224
BIO Men's Ultimate
Cargo Pant**

Inseam: 31½"

Tall: 33½"

Features:

19" Leg Opening / Full
Drawstring Waist with Back
Elastic / Working Button and
Zipper Fly / **6 Pockets:** Two
Angled Front Hip Pockets
Two Mitered Back Hip Pockets
and Mitered Double Cargo
Pocket

55% Cotton
42% Polyester
3% Spandex
STRETCH

Sizes: S-5X, ST-2XT

ST-2XT
Sizes Only

038 Wine

064 Royal

080 Caribbean

092 Eggplant

**19224
054**

**19044
BIO Men's Ultimate
V-neck**

Features:

28" Length / Set-In Sleeves
Angled Shoulder Detail and Front
and Back Seaming to Maximize Fit
2 Pockets: Mitered Double Chest
Pocket with Pencil Stitch

55% Cotton
42% Polyester
3% Spandex
STRETCH

Sizes: S-5X

**Men's top and pant come
in these solid colors:**

- 015 Black
- 046 Ceil
- 1054 Pewter
- 092 Eggplant



**Full drawstring and working fly. Various
pockets for all the storage you could ask for.**



19022
BIO Modern Wrap

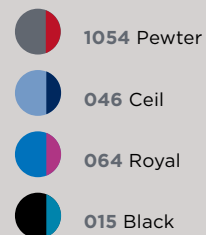
Length: 26"

Features:

Set-In Sleeves / Princess Seams
3 Pockets: Two Lower On Seam
Pockets Plus Outer Welt Pocket /
Side Vents

55% Cotton
42% Polyester
3% Spandex
STRETCH

Sizes: XXS-5X



19337
**BIO Everyday
Warm-Up Jacket**

Length: 27"

Features:

Set-In Sleeves / **3 Pockets:** Two Rounded
Patch Pockets with One Small Welt Pocket
5 Snap Closure

55% Cotton
42% Polyester
3% Spandex
STRETCH

Sizes: XXS-5X



18987

**Moisture Wicking
Side Panel
Snap Front Chef Coat**

Length: 29"

Features:

5 Nylon Cap Snap Closure on
Angled Front / Welt Breast Pocket
/ Split Sleeve Pocket / Mesh Side
Panels

65% Polyester
35% Cotton Poplin
with Soil Release

Mesh: 100% Polyester Moisture
Wicking Breathable Mesh

Sizes: 2X-5X



016 Red



011 White



015 Black

Sizes: XS-5X



064 Royal



**BREATHABLE
MOISTURE
WICKING MESH**





18017

UNISEX Long Sleeve Moisture Wicking Mesh Back Chef Coat

Features:

29" Length / 8 Button Front / Stand Up Collar / Split Sleeve Pocket / Chest Pocket / French Cuffs / 2-Piece Back / Upper Back - 100% Polyester Moisture Wicking Breathable Mesh

65% Polyester / 35% Cotton Poplin with Soil Release

Mesh: 100% Polyester Moisture Wicking Breathable Mesh

Sizes: XXS-5X



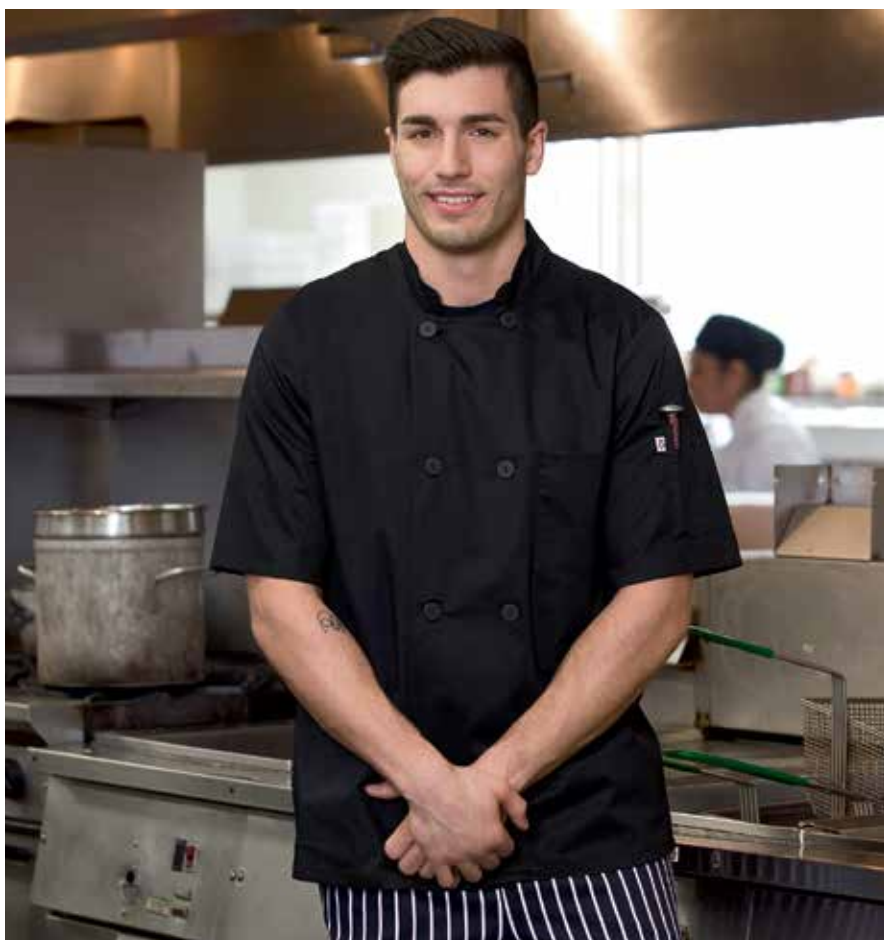
011 White



015 Black



**BREATHABLE
MOISTURE
WICKING MESH**



18516

Short Sleeve Stretch Executive Chef Coat

Features:

29" Length / 8 Button Closure / Action Back Flap Vent with Moisture Wicking Breathable Mesh Underneath / Angled Towel Pocket on Lower Back Hip / 1 Chest Pocket / Split Sleeve Pocket

55% Cotton / 42% Polyester / 3% Spandex

Mesh: 100% Polyester Moisture Wicking Breathable Mesh

Sizes: XS-5X



015 Black



**BREATHABLE
MOISTURE
WICKING MESH**



18120

Executive Chef Coat

Features:

31" Length/ 12 Black Button Closure / Black Piping Trim Around Collar, Front Breast Pocket and Roll-Up Cuffs / Split Sleeve Pocket

65% Polyester / **35%** Cotton
Fine Line Twill with Soil Release

Sizes: XS-5X



011 White

18529

Short Sleeve Executive Chef Coat

Length: 29"

Features:

8 Black Knot Buttons / Piping Trim Around Collar / Moisture Wicking Breathable Mesh Vent on Back / Roll-Up Split Cuff Sleeve with Houndstooth Trim Inside / Houndstooth Trim on Inside Back Neck / Split Sleeve Pocket / Breast Pocket with Houndstooth Band Trim

65% Polyester
35% Cotton Poplin with Soil Release

Mesh: 100% Polyester Moisture Wicking Breathable Mesh

Sizes: 2X-5X



011 White

Sizes: XS-5X



015 Black



18213

Printed Long Bistro Apron with Front Kick Pleat

Length: 32"

Features:

Front Waist Pocket including Pen Pocket / Wraparound
Self-Ties / Front Kick Pleat / Contrast Stitching

100% Easy-Care Cotton Twill

Comes in **Rockstar-325** Print Only



18016

Knot Button Chef Coat

Features:

29" Length / 8 Knot Buttons / Stand-Up Collar /
Split Sleeve Pocket
French Cuffs / 2-Piece Back

65% Polyester / **35%** Cotton
Fine Line Twill with Soil Release

Sizes: XS-5X



011 White

18035

UNISEX Moisture Wicking Mesh Back Chef Coat

Features:

29" Length/ 8 Button Front with Two Hidden Inside Top Placket Buttons / Stand-Up Collar / Split Sleeve Pocket / 2-Piece Back / Upper Back - 100% Polyester Moisture Wicking Breathable Mesh

65% Polyester / **35%** Cotton Poplin with Soil Release

Mesh: 100% Polyester Moisture Wicking Breathable Mesh

Sizes: XXS-5X



016 Red



1004 Charcoal



18025

UNISEX Short Sleeve Chef Jacket

Length: 29"

Features:

10 Black Button Closure / Breast Pocket / Split Sleeve Pocket

65% Polyester

35% Cotton

Poplin with Soil Release

Sizes: XXS-5X



038 Wine



064 Royal



122 Purple



1004 Charcoal



016 Red





18030

LADIES Pull-On Drawstring Elastic Pant

Leg Opening: 16 ½"

Inseam: 33"

Features:

2" Elastic Waist with Inside Drawstring / **3 Pockets:** 2 Front Pockets and 1 Back Hip Pocket

Easy Care 100% Cotton Twill

Sizes: XS-5X



3578 Guava Zest



3579 Pink Icing

18038

LADIES Long Sleeve Executive Coat with Mesh Back Vent

Length: 28"

Features:

5 Textured Shank Buttons / Contrast on Collar, Facing and Cuff / White Contrast Piping on Collar, Facing, Pocket Tops and Cuff / Contrast Moisture Wicking Breathable Mesh Vent on Back / Split Sleeve Pocket

65% Polyester

35% Cotton

Poplin with Soil Release

Mesh: 100% Polyester

Moisture Wicking

Breathable Mesh

Sizes: XS-5X



**BREATHABLE
MOISTURE
WICKING MESH**



1258 Shocking Pink



1231 Posh Pink



122 Purple



011 White



016 Red



18501

LADIES Angle Zip Front Chef Coat

Features:

27" Length / Angled Zip Front Closure /
Color Matching Moisture Wicking Breathable
Mesh Side Panels / 2 Split Sleeve Pockets /
Side Vents

65% Polyester / **35%** Cotton Poplin with Soil
Release

Mesh: **100%** Polyester Moisture Wicking
Breathable Mesh

Sizes: XS-5X



1004 Charcoal



015 Black



18255

Skull Cap with Tie

Features:

Keep Cool Moisture Wicking Center Panel
Elastic Back with Adjustable Tie

65% Polyester / **35%** Cotton Poplin with Soil
Release

Panel: **100%** Poly Moisture Wicking
Breathable Mesh

One Size



015 Black



BREATHABLE
MOISTURE
WICKING MESH





18026

LADIES 8 Button Chef Jacket

Features:

8 Button Front / Stand-Up Collar / Split Sleeve Pocket / 1-Piece Back
French Cuffs

65% Polyester / 35% Cotton Poplin with Soil Release

Sizes: 2X-5X Only



011 White



015 Black



18028

LADIES Short Sleeve Executive Coat

Length: 28"

Features:

8 Textured Shank Buttons / Contrast Piping Around Collar, Front and on Breast Pocket / Split Sleeve Pocket

**65% Polyester
35% Cotton
Poplin with Soil Release**

Sizes: XS-5X



122 Purple



016 Red



18101

Zipper Front Pant

Leg Opening: 18"

Inseam: 33"

Features:

Traditional Pull-On Pant with 2" Elastic Waist and Inside Drawstring / **4 Pockets:** 2 Side Seam, 1 Back Hip and 1 Side Pocket

65% Polyester

35% Cotton

7.25 oz Heavyweight Twill with Soil Release

Sizes: XS-5X



015 Black



18217

Unisex Mesh Knee Jogger Style Pant

Leg Opening: 11"

Inseam: 31"

Features:

2" Fully Covered Elastic Waistband / **4 Pockets** - 2 Front Hip, 1 Back Hip and 1 Cargo with Pen Slit / Back Knee Moisture Wicking Breathable Mesh Panels / Jogger Style Elastic Cuff

Easy Care 100% Cotton Twill

Mesh: 100% Polyester Moisture Wicking Breathable Mesh

Sizes: XXS-5X



015 Black



**BREATHABLE
MOISTURE
WICKING MESH**



18100

UNISEX Pull-On Pant

Leg Opening: 16"

Inseam: 34"

Features:

2" Elastic Waist with Inside Drawstring / **4 Pockets:** 2 Side Seam, 1 Back Hip and 1 Side Pocket with 5 Star Logo Tag

Easy Care 100% Cotton Twill

Sizes: XXS-5X



3505
Great
Catch

3501
What's
Cooking

325
Rockstar

18227

Print Trimmed Mid-Length Waist Apron

Length: 19"

Features:

4 Stitched Pockets Including Pen Pockets

65% Polyester

35% Cotton

Heavyweight Twill Poplin with Soil Release

Comes in **Black-015** with **Houndstooth** Print Trim



18024

Long Bistro Apron

Length: 32"

Features:

Front Waist Pocket including Pen Pocket / Wraparound Self Ties

65% Polyester 35% Cotton

Heavyweight Twill with Soil Release



011 White



015 Black



18208

Bakers Cap

Features:

Elastic Back for Comfortable Fit.

100% Cotton No-Iron Twill



011 White



015 Black



18202

Chef's Hat

Features:

Adjustable Self Adhesive Closure / Easy Care
100% Cotton Twill



015 Black



18201

Chef's Hat

Features:

Adjustable Self Adhesive Closure

65% Polyester

35% Cotton

Fine Line Twill with Soil Release



011 White



18206

Mesh Top Cook Hat

Features:

Moisture Wicking Mesh Top
Adjustable Self Adhesive Closure

100% Cotton No-Iron Twill

Top: 100% Poly Moisture Wicking Breathable Mesh



011 White



015 Black



18211

Belt Pouch

Features:

11¼" Long / 2 Pockets - 1 with Pen Stitch

65% Polyester 35% Cotton

Heavyweight Twill with Soil Release

Sold in Dozen Quantity



015 Black

Antimicrobial Technology

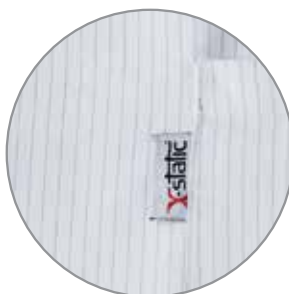
Meta delivers world class protection to you in a new performance Labcoat that is powered by X-STATIC®

863
011



Specifically designed to protect the labcoat from odor causing bacteria, the X-STATIC® silver technology also delivers performance that helps regulate your body temperature as well as the reduction of static buildup.

Unlike many other antimicrobial finishes in the marketplace, you know you are wearing performance because you can actually see the silver!



2% X-Static® Silver Twill

862
011



863

37" LADIES X-Static® Labcoat

6 POCKETS

3 Welt Pockets
Antimicrobial Fabric Protection
Odor Elimination
Thermal Comfort Management
Anti-static Performance
All Permanent for
Life of Garment
Back Belt

78% Polyester
20% Cotton
2% X-STATIC® Silver Twill

SIZES
0-20

All Labwear available in white only
unless otherwise noted



862

38" MENS X-Static® Labcoat

6 POCKETS

Antimicrobial Fabric Protection
Odor Elimination
Thermal Comfort Management
Anti-static Performance
All Permanent for
Life of Garment
Top Stitched Collar, Lapel & Front
Hand Access Slits

78% Polyester
20% Cotton
2% X-STATIC® Silver Twill

SIZES
32-56, 40L-48L

All Labwear available in white only
unless otherwise noted



996
011



996

LADIES

**Meta Pro Stand-Up
Collar Tri-Blend
Stretch Labcoat**

Features:

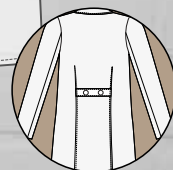
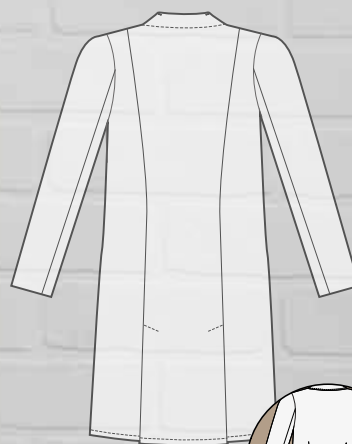
35" Length / **2 Roomy
Patch Pockets** /
5-Button Concealed
Placket Closure / Double
Kick Pleat

75% Polyester

21% Rayon

4% Spandex Soft
Stretch Tri-Blend Fabric

Sizes: 0-20





894
011

894

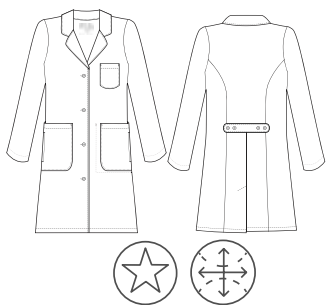
**37" LADIES
Meta Pro Labcoat**

4 Pockets
2 Lower Outside Pockets
1 Chest Pocket / 1 Inside Pocket
4 Button Closure
Back Princess Seams
Loose Back Belt with Button Detail
Kick Pleat

75% Polyester 21% Rayon 4% Spandex
Soft Stretch Tri-Blend Fabric

Sizes: 0-20

All Labwear available in white only, unless otherwise noted



1097
011

1097

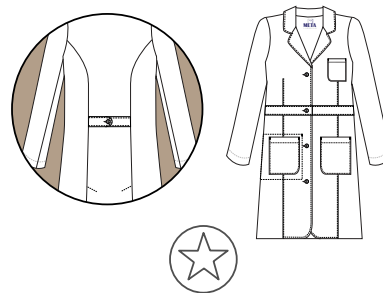
**35" Ladies
Twill Trench Style Coat**

4 Pockets
2 Lower Outside, 1 Chest &
1 Inside iPad Pocket
4 Button Closure
Loose Button Back Belt
Back Princess Seams
Double Kick Pleat

65% Polyester 35% Cotton
Fine Line Twill with Soil Release

Sizes: 0-20

All Labwear available in white only, unless otherwise noted



650
011



650

**40" MENS
Cotton Labcoat**

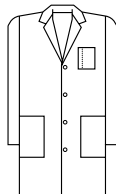
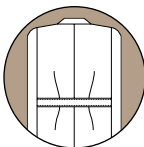
4 POCKETS

1 Inside Pocket
Hand Access Slits
Pen Divider
on Chest Pocket
Sewn Down Back Belt with Accent Darts

**100% Easy Care
Cotton Twill**

SIZES 36-48, 42L-48L

All Labwear available in white only unless otherwise noted



Matching Styles

651
011



651

**38" LADIES
Cotton Labcoat**

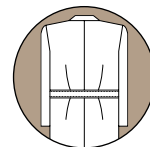
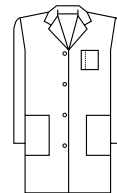
4 POCKETS

Pen Holder
in Breast Pocket
1 Inside Pocket with
Hand Access Slits
Sewn Down Back Belt with Accent Darts

**100% Easy Care
Cotton Twill**

SIZES 6-20

All Labwear available in white only unless otherwise noted



6150
011

6150

35" LADIES Labcoat

4 Pockets

Inside Pocket
Deep Front Pockets
Hand Access Slits
Pleated Back
Sewn Down Back Belt

65% Polyester

35% Cotton

Performance Poplin
with Soil Release

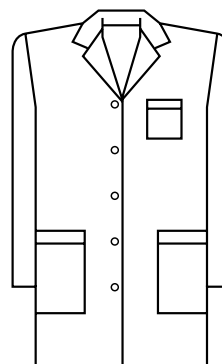
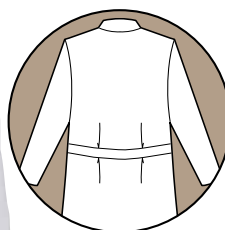
Sizes:

0-20, 42-52 (22W-32W)

All Labwear available in white
only, unless otherwise noted



HAND
ACCESS
SLITS!





767
011

767

**36" LADIES
Embroidered Labcoat**

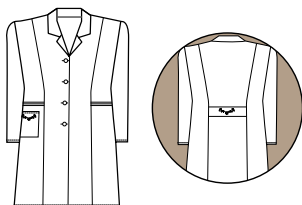
3 Pockets

Princess Seams
Front and Back Welt Pockets
Cell Phone Pocket
Embroidery Detail on Cell Pocket

65% Polyester 35% Cotton
Fine Line Twill with Soil Release

Sizes: 0-20, 40-48 (20W-28W)

All Labwear available in white only, unless otherwise noted



881
011

881

**32" LADIES
Stretch Labcoat**

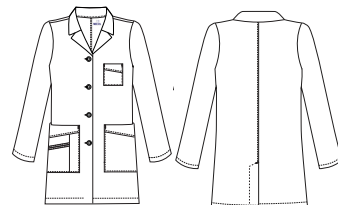
4 Pockets

2 Lower
Slanted Pocket Band Top Loading Pockets,
1 Chest Pocket and 1 Welt Pocket
4 Button Closure
Kick Pleat

55% Cotton 42% Polyester
3% Spandex Stretch Poplin

SIZES: 0-20

Note: this style comes in White-011 and Black 015



1199
011



1199

38" MENS
Twill Trench Style Coat

5 Pockets

2 Outer Pockets,
1 with Hidden Media Pocket with Earbud Port, 1
with Concealed Flap, and 1 Inside iPad Pocket
5 Button Closure • Hand Access Slits • Kick Pleat
Trench Coat Detail on Front and Back

65% Polyester 35% Cotton
Fine Line Twill with Soil Release

Sizes: 32-56

All Labwear available in white only, unless otherwise noted



*All Meta® styles shown in Last Call
do not adhere to MAP pricing policy.



1168

34" MENS
Mid-Length Labcoat

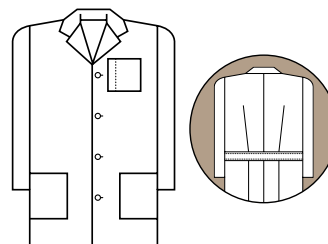
4 Pockets

2 lower Patch Pockets
1 Inside Pocket
1 Chest Pocket with Pen Slit • Hand Access Slits
Pleated Back with Sewn Down Back Belt

65% Polyester 35% Cotton
Performance Poplin with Soil Release

Sizes: 34-56

All Labwear available in white only, unless otherwise noted



924
011



924

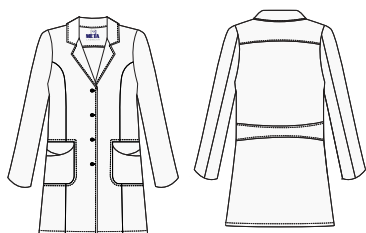
**34" LADIES
Meta Pro Double Curve Pocket
Tri-Blend Stretch Labcoat**

4 Pockets

- 2 Double Curved Outside Pockets
- 4 Button Closure
- Sewn Down Back Belt
- Kick Pleat

75% Polyester / 21% Rayon / 4% Spandex
Soft Stretch Tri-Blend Fabric
Sizes: 0-18

All Labwear available in white only, unless otherwise noted



*All Meta® styles shown in Last Call
do not adhere to MAP pricing policy.

875
011



875

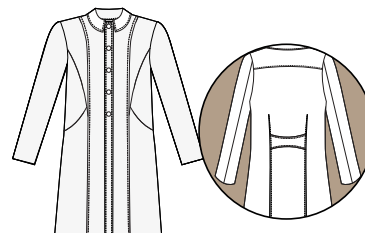
**33" LADIES
Meta Pro High Collar
Tri-Blend Stretch Labcoat**

2 Pockets

- 2 Deep Top Loading Pockets
- Fashionable Round Collar
with High Neck Closure
- Sewn Down Back Belt
with Button Detail
- Five Button Closure

75% Polyester / 21% Rayon / 4% Spandex
Soft Stretch Tri-Blend Fabric
Sizes: 0-20

All Labwear available in white only, unless otherwise noted



Wear collar
unbuttoned to
make a slight lapel
or completely
buttoned for full
coverage

Resists Spills Fabric provides breakthrough spill resistance.

Each fiber has been fundamentally transformed through nanotechnology, and the result is a fabric that:

- ✓ Repels liquids
- ✓ Provides long-lasting protection
- ✓ Extends the life of the fabric
- ✓ Retains fabric's natural softness
- ✓ Allows fabric to breathe naturally



17020
011



17010
011

17020

**40" MENS
Nano-Care Labcoat**

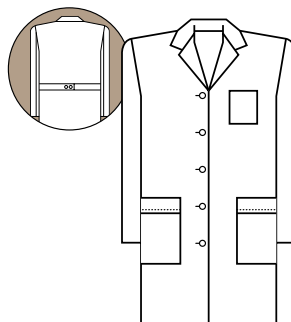
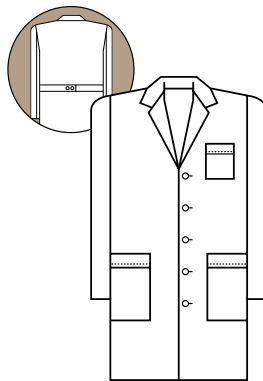
4 Pockets

1 Inside Pocket
Hand Access Slits
1-Piece Back with 2 Button
Swing Belt
2-Piece Sleeves

**65% Polyester
35% Cotton**
Poplin with Nano-Tex™
Resist Spills Fabric

Sizes:
XS-5X

All Labwear available in white only, unless otherwise noted



Matching Styles

17010

**39" LADIES
Nano-Care Labcoat**

4 Pockets

Inside Pocket
Hand Access Slits
1-Piece Back
with 2 Button Swing Belt

**65% Polyester
35% Rayon,**
Poplin with Nano-Tex™
Resist Spills Fabric

Sizes:
XS-5X

All Labwear available in white only, unless otherwise noted



6125
011

6125

**31" MENS
Professional Shirt**

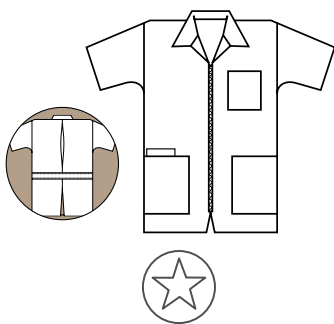
4 Pockets

1 Cell Phone Pocket
Separating Zipper
Inverted Back Pleat
for Extra Movement

65% Polyester 35% Cotton
Performance Poplin with Soil Release

Sizes:S-5X

All Labwear available in white only, unless otherwise noted



6116
015

6116

**40" UNISEX
Labcoat**

4 Pockets

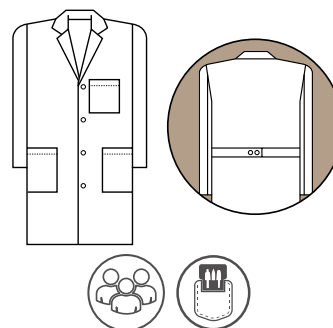
1 Inside Pocket
Hand Access Slits
2-Piece Back Swing Belt

**65% Polyester
35% Cotton**
Poplin with Soil Release

Sizes: XS-5X

Available In:

● 015 Black





Value for Groups
Meta coats in
Fundamental styles
combine function
with the utmost
in labcoat VALUE.

15012
011

15012

33" $\frac{3}{4}$ Sleeve
LADIES Labcoat

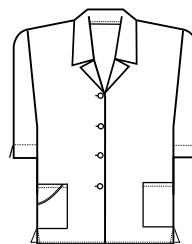
3 POCKETS

Notched $\frac{3}{4}$ Sleeves
Side Vents
1-Piece Back

65% Polyester
35% Cotton
Poplin with Soil Release

SIZES XXS-5X

All Labwear available in white
only unless otherwise noted



Great coats at a
great price.

Ladies (9-11) | Fits Shoe Sizes 5-10



Quarter Crew



5853-011
5856-015
5903-032



Crew



5913-011
5912-032

Men's (10-13) | Fits Shoe Sizes 9 & up



Crew



5873-015



Tab Cut



5861-011
5857-015

555

Graduated Compression Knee High Stockings

Features:

Formed Heel for Long Lasting Durability and Great Fit / Outward Seaming Prevents Skin Irritation / Moisture Management System Allows Skin to Breathe / Latex Free and Opaque

Knitted in the USA | 79% Nylon / 20% Spandex / 1% Other

Size: Unisex Sizing: S-XL



054 Navy

1049 Beige

011 White

015 Black



1017 Pink Cheetah 1018 Red Cheetah 1016 Purple Cheetah 1015 Blue Cheetah

35301

Calf Compression Sleeve

Features:

Covers from Above Ankle to Bottom of Knee
Graduated Compression Decreases Up the Leg
Improves Blood Circulation / Reduces and Relieves Swelling, Aches and Pains / Moisture Management System Allows Skin to Breathe / Latex Free

Knitted in the USA

79% Nylon/ 20% Spandex/ 1% Other

Size: Unisex Sizing: S-2X

35300

Calf Compression Sleeve

Features:

Covers from Above Ankle to Bottom of Knee
Graduated Compression Decreases up the Leg
Improves Blood Circulation / Reduces and Relieves Swelling, Aches and Pains / Moisture Management System Allows Skin to Breathe / Latex Free

Knitted in the USA | 79% Nylon / 20% Spandex / 1% Other

Size: Unisex Sizing: S-XL



011 White 015 Black 1049 Beige 1053 Dark Beige 1055 Neon Pink



**CHECK BACK FOR MORE
LAST CALL ITEMS EACH SEASON**

615 Macon Street, McDonough GA 30253
800.222.3834

www.whiteswanbrands.com
www.Jockey-scrubs.com

© 2020 White Swan Brands. All Rights Reserved. Lit # RE20677
JOCKEY and Solid Illusion are trademarks of Jockey International, Inc.
X-Static® is a registered trademark of Noble Biomaterials, Inc.

Products described in the catalog are made from
domestic and international materials